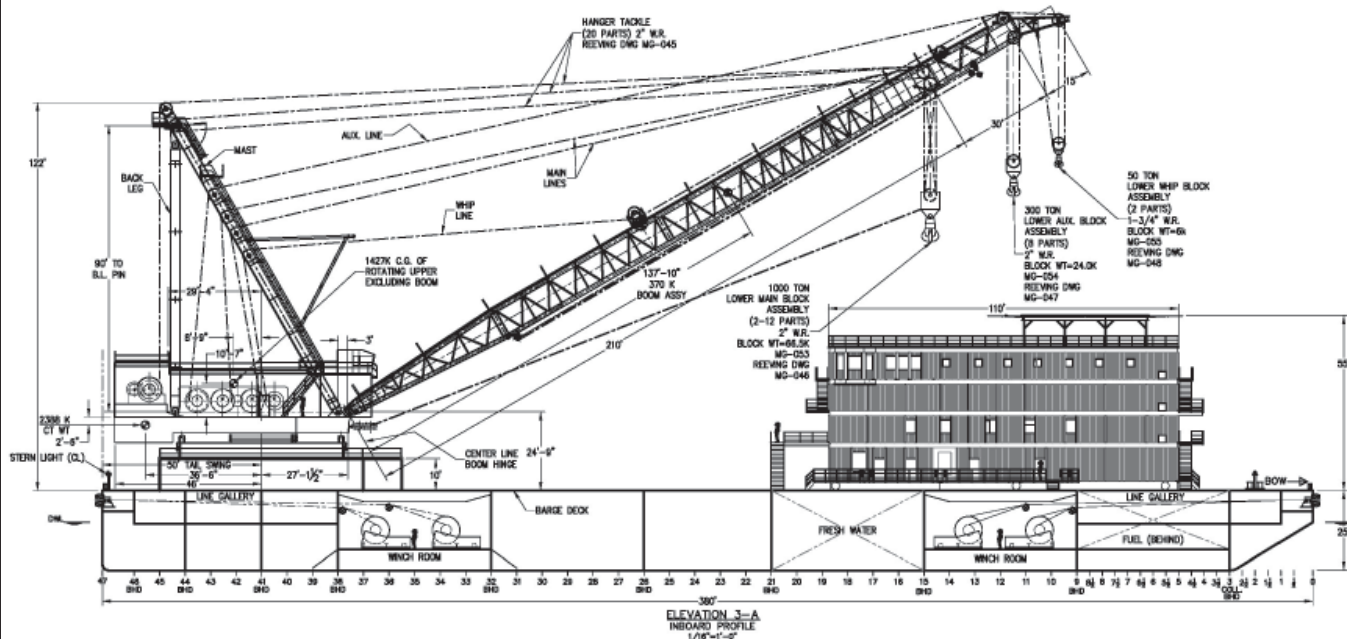




Manson Derrick Barge *E.P. Paup*



Principal Characteristics

Main Hoist

SWL 1000 ST Over the Stern @ 90' Radius

SWL 800 ST full Revolving @ 90' Radius

Maximum Hook Height 210'

Auxiliary Hoist

SWL 300 ST

Maximum Hook Height 235'

Whip Hoist

SWL 25 ST / 50 ST 2 Part

Maximum Hook Height 260'

Utility Deck Crane

Make Manitowoc

Model 777

Type Crawler

Capacity 150 Tons

Vessel Specifications

Registry US Flag

Class ABS/Solas

Length 380'

Width 105'

Depth 25'

Estimated Minimum Operating Draft 10'

VHF/SSB and Satellite Phone/Data Communications

Quarters Capacity 156 Person

Fuel Storage 300,000+ Gal.

Potable Water Storage 430,000+ Gal.

Water Maker 10,000 GPD

Helideck

8 Point Mooring Capacity

Wire Rope 6,000' of 2"

Anchor Type 10 ton Delta Flipper